

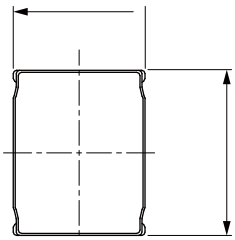


# Wire Wound SMD Power Inductor Size 252010

Part No	Inductance @ 1MHz/1V (μH)	Tolerance	Temperature Rise Current Typ. (A)	Temperature Rise Current Max. (A)	Saturation Current Typ. (A)	Saturation Current Max. (A)

Dimensions: [mm]

Land Pattern: [mm]



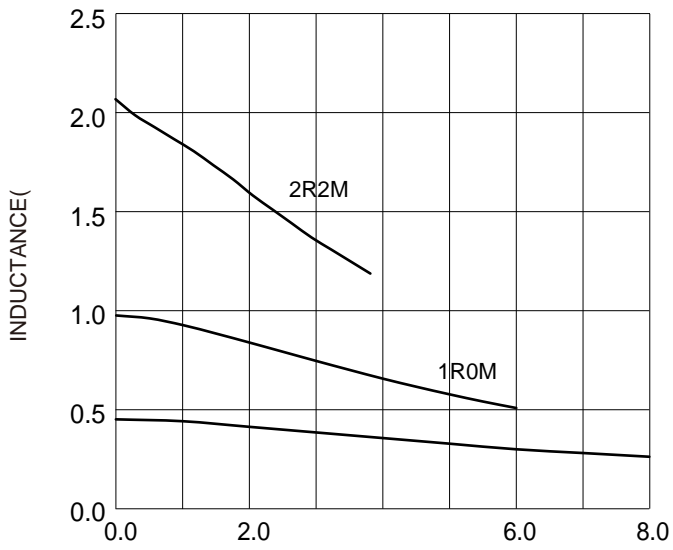
Electrical Properties:

Saturation Current that will cause initial inductance to drop approximately 30%  
°C

°C.

## Typical Electrical Characteristics:

Inductance VS. Current Characteristics:



Temperature Rise VS. Current Characteristics:

