

NRSM Series

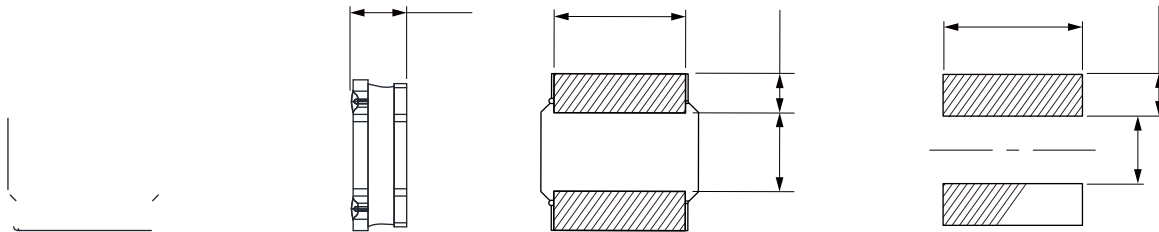


FEATUERS

-
-
-

APPLICATION

-
-



	(μ H)				Satura on	Satura on	()	()
NRSM4020S-R24M	0.24	$\pm 20\%$	7.00	6.00	17.0	14.0	0.013	0.017
NRSM4020S-R33M	0.33	$\pm 20\%$	6.80	5.90	16.0	13.0	0.015	0.020
NRSM4020S-R47M	0.47	$\pm 20\%$	6.80	5.90	12.0	11.0	0.016	0.022
NRSM4020S-R68M	0.68	$\pm 20\%$	6.70	5.80	11.5	9.00	0.0192	0.0245
NRSM4020S-1R0M	1.00	$\pm 20\%$	6.70	5.80	11.0	8.70	0.023	0.028
NRSM4020S-1R5M	1.50	$\pm 20\%$	6.00	5.20	9.60	7.70	0.032	0.038
NRSM4020S-2R2M	2.20	$\pm 20\%$	4.80	4.00	7.50	6.00	0.046	0.056
NRSM4020S-3R3M	3.30	$\pm 20\%$	4.00	3.40	5.90	4.70	0.073	0.088
NRSM4020S-4R7M	4.70	$\pm 20\%$	3.30	2.85	4.90	4.00	0.095	0.115
NRSM4020S-6R8M	6.80	$\pm 20\%$	2.80	2.40	4.20	3.00	0.130	0.160
NRSM4020S-8R2M	8.20	$\pm 20\%$	2.40	2.10	3.80	2.90	0.175	0.220
NRSM4020S-100M	10.0	$\pm 20\%$	2.35	2.00	3.50	2.80	0.190	0.220
NRSM4020S-150M	15.0	$\pm 20\%$	1.20	1.00	2.80	2.10	0.305	0.400
NRSM4020S-220M	22.0	$\pm 20\%$	1.10	0.95	1.50	1.30	0.415	0.545
NRSM4020S-330M	33.0	$\pm 20\%$	0.86	0.70	1.40	1.20	0.650	0.850
NRSM4020S-470M	47.0	$\pm 20\%$	0.66	0.56	1.30	1.10	0.950	1.200

Temperature Rise Current: For max value, $T < 40^{\circ}\text{C}$; For Typ value, T is approximate 40°C

